



TR EQUIPMENT



Hygiene Equipment Designed for People

Assisted Shower



Height Adjustable Multi-tasking Showering Equipment

TR designs equipment that meets all your hygiene and care giver safety requirements when providing both acute and long term care settings

Transferring - Transporting - Bathing - Showering - Dressing

Hygiene Equipment Designed for People



TR Equipment offers the widest range of shower trolley's available with models ranging from pediatric to the highest level of adult bariatric. All TR Shower Trolleys encompass famous Swedish design principles for ease of use and smart functionality. Inherent in the design of all TR Shower Trolley's is safety for both the patient and care giver while also being easy to clean and disinfect after use.

Constructed of high quality and durable components which are built on a framework of corrosion resistant metals and stainless steel smartly designed for a long working life. TR is able to provide strict controls which ensure the quality of its design by manufacturing all metal framework in-house.

TR has a proven history of providing safe and durable assisted bathing equipment with a hard earned reputation for long lasting and economical solutions for our customers.



Transport



Bath



Shower

Choose the right equipment and improve the working environment for your staff. Prevent back injuries, increase productivity with the best value available

All TR products are height-adjustable for caregiver's ergonomic safety.

Core product values

- Safety & Simplicity
- Functionality
- Hygiene
- Low cost of ownership



Company values

- Patient Hygiene Experts
- Excellent customer service
- Flexible and long term partner

TR Equipment, founded in 1985, develops, manufactures and markets Patient Hygiene & Rehabilitation equipment, designed for people. The product range covers height adjustable bathtubs, shower trolleys, patient bath lifts and shower chairs for patients with high dependency, low mobility and severe disabilities.

All products are manufactured in Sweden and marketed by our three subsidiaries in US, UK and Germany as well as around 40 distributors all around the world.

Head office

TR Equipment AB, Sweden
Phone: +46 140 38 50 60
info@trequipment.se
www.trequipment.com



Group Subsidiaries

TR Group Inc, US, Phone: +1 (800) 752 6900
TR Equipment Ltd, UK, Phone: +44 (0) 844 335 8386
TRanspoRehaMed GmbH, Germany, Phone: +49 (0) 212 645850-0



Registered at Medical Products Agency, Sweden, as a MD Class 1 product, MDD 93/42EEC.

TR reserves the right to make design changes and/or improvements without notice.



Intertek



Intertek





Shower trolleys

TR 2000/3000.....4-5

TR 3200.....6-7

Bariatric Shower trolleys

TR 4200.....8-9

TR 4000.....10-11

Shower chair

TR 100012-13

Shower panel

TR 281014-15

Shower Trolley Dimension Matrix.....16

TR 2000



TR 3000



TR 3200



TR 4200



TR 4000



TR 1000



TR 2810



TR 2000/3000

Shower Trolleys *max patient weight 330 lbs (150 kg)*

TR 2000/3000 Shower Trolleys

The TR 2000 hydraulic and TR 3000 battery operated shower trolleys include a side mounted column, allowing the trolley stretcher to overlap the bed for a safe and easy patient transfer.

The trolley is foot operated and height adjustable, enabling the attendant to find the most efficient and convenient working height and leaving both hands free to tend to the patient.

The trolley assists and functions at the bed side allowing the attendant to have easy access to the trolley controls which includes; height adjustment, stretcher tilt, castor brakes and straight steering.

The trolley drains at both ends allowing the patient to be positioned in either direction.



Specifications

Length	63"/75"/83" (1600/1900/2100 mm)
Width	27 ¾" (705 mm)
Height:	24 ½ - 36 ½" (625 - 925 mm) Standard 27- 39" (685 - 985 mm) High chassis, option
Working Load Limit	330 lbs (150 kg)
Chassis:	Powder coated stainless and zinc plated steel
Castors:	Two castors with brakes and two with straight steering
Control:	Foot control for height adjustment
Mattress, pillow	Flame retardant material -grey
Battery (TR 3000)	Rechargeable, 24 V, 7Ah



TR 3000 Battery operated - Back of chassis



TR 2000 Hydraulic - Back of chassis



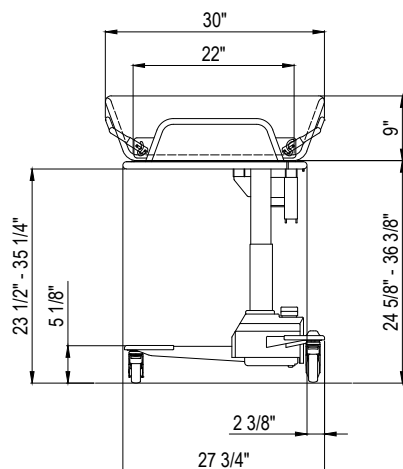
TR 2000 Hydraulic - High chassis and
TR 3000 Battery operated - High chassis



Features

- The belt driven height mechanism on the TR 3000 allows for a quiet and smooth adjustment free from sudden movements. The height adjustment is driven by two high capacity rechargeable batteries and when charging is needed an audible tone sounds.
- The stretcher can easily be tilted to the "Trendelenburg" position, to alleviate person in shock. The stretcher can move in either direction with the tilt control handle located at both ends. The tilt position is controlled by gas springs so that the attendant has infinite tilt positions within the tilt range.
- The large castors with brakes and low angled legs with straight steering castors are features that make the trolley easy to steer and maneuver.
- The low center of gravity of the chassis lends stability to the trolley.
- The side rails can be pressed together when traveling through narrow doorways reducing the trolley width.
- The chassis is made of powder coated stainless and zinc plated steel.
- Designed for easy cleaning.
- Foot operated and height adjustable enables the attendant to find the most efficient and convenient working height and gives the attendant both hands free to tend to the patient.
- Drains at both ends allowing the patient to be positioned in either direction.
- All models come with mattress, head pillow and 39.4" (1m) drainage hose as standard.
- Battery operated models come with a magnetic (MAGCODE) battery charger.

Dimensions standard (inch)



Accessories/Options

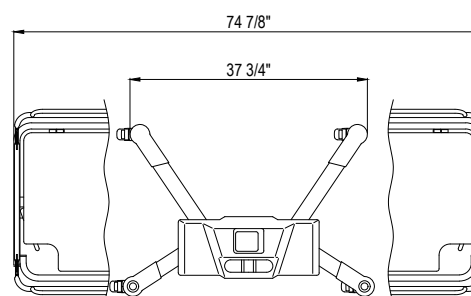
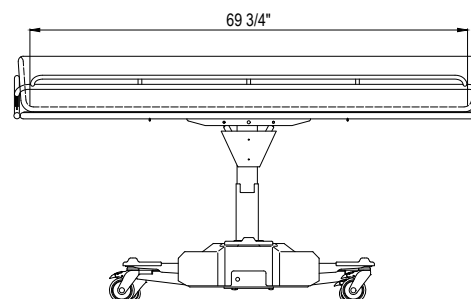
- Backrest wedge pillow, 15 degrees.
- For slinglift transfers, a factory mounted set of castors allowing a minimum of 5.3" (135 mm) free space under the front legs can be added. It raises the trolley stretcher 2.4" (60 mm).
- All models can be delivered with blue or yellow mattress and head pillow instead of grey (standard).
- Fastners/straps for attachment on mattresses to side rails.
- Safety rails in powder coated stainless steel
- Longer drainage hose 98.4" (2.5 m), instead of 39.4" (1 m) as standard.

Models - Hydraulic

0522010	TR 2000	Standard	L = 63" (1900 mm)
0522015	TR 2000 - S	Pediatric	L = 75" (1600 mm)
0522016	TR 2000 - L	Long	L = 83" (2100 mm)

Models - Battery operated:

0522000	TR 3000	Standard	L = 63" (1900 mm)
0522005	TR 3000 - S	Pediatric	L = 75" (1600 mm)
0522006	TR 3000 - L	Long	L = 83" (2100 mm)



TR 3200

Shower Trolleys *max patient weight 440 lbs (200 kg)*

TR 3200 Shower Trolleys

The TR 3200 battery operated shower trolley includes a side mounted column, allowing the trolley stretcher to overlap the bed further for a safe and easy resident transfer.

The TR3200 comes in two sizes;
76.8 x 27.4" (1950 x 695 mm) Standard
84.6 x 31.3" (2150 x 795 mm) Large

Both sizes are available with on-board battery solution or with removeable rechargeable batteries.

The TR3200 height adjustable Shower Trolley is a great solution to prevent back injuries and to minimize static load and offers a safe and ergonomic working environment for the caregiver.

The trolley drains at both ends allowing the patient to be positioned in either direction.



Specifications

Length	Standard 76.8" (1950 mm), Large 84.6 (2150 mm)
Width	Standard 27.4" (695 mm), Large 31.3" (795 mm) with side rails in upright position
Height:	Min. 19.7" (500 mm), Max. 35.4" (900 mm)
Max Patient weight	440 lbs (200 kg)
Chassis:/Frames	Powder coated stainless steel
Castors:	4" (100 mm) twin castors.
Control:	Hand control for height and tilt adjustment
Mattress, pillow	Blue, Flame retardant material
Battery (TR 3000)	On-board: rechargeable, 24V, 7Ah Removeable and rechargeable: 1 x 24V, 5 Ah



Features

- Designed for easy cleaning and ease in mobility and transfers.
- Drains at both ends allowing the patient to be positioned in either direction.
- Side mounted column for improved patient transfers.
- Maximum patient weight of 440 lbs (200 kg).
- Large patient care area at 25.2" or 29.1" (640 or 740 mm).
- The side rails can be pressed together when travelling through narrow doorways reducing the trolley width.
- Floor clearance at 6.3" (160 mm) to enable floor lift transfers.
- Quiet and smooth height/tilt adjustable motion.
- The stretcher can easily be tilted to the "Trendelenburg" position, to alleviate person in shock.
- The chassis and sub-frames are made of powder coated stainless steel.
- All models come with a magnetic (MAGCODE) battery charger, mattress, head pillow and 39.4" (1 m) drainage hose as standard.
- Both versions Standard and Large are available with an on board battery solution or with removeable rechargeable batteries.



Flexible drainage hose with hose holder and Hand control for height/tilt adjustment



100 mm twin castors.
2 braked and 2 straight steering as standard or with 4 braked castors.



TR 3200 with TR 2810 Shower Panel

Accessories/Options

- Backrest wedge pillow, 15 or 30 degrees.
- All models can be delivered with grey head pillow instead of blue (standard).
- Fasteners/straps for attachment on mattresses to siderails.
- Longer drainage hose 98.4" (2.5 m), instead of 39.4" (1 m) as standard.

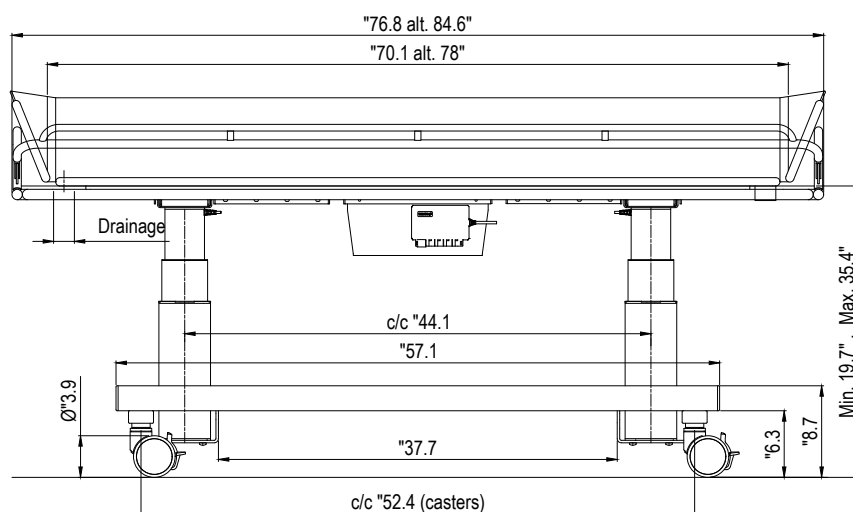
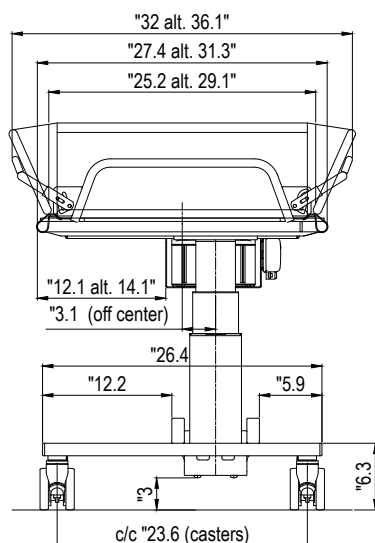
Models with on board batteries

0532000	TR 3200	Standard	76.8 x 27.4" (1950 x 695mm)
0532010	TR 3200 L	Large	84.6 x 31.3" (2150 x 795mm)

Models with rechargeable batteries

0532005	TR 3200 R	Standard	76.8 x 27.4" (1950 x 695mm)
0532015	TR 3200 LR	Large	84.6 x 31.3" (2150 x 795mm)

Dimensions (inch)



TR 4200 Atlas Jr.

Bariatric Shower Trolleys *max patient weight 600 lbs (270 kg)*

TR Atlas Jr. Bariatric Shower Trolley

The ATLAS Jr battery operated Bariatric Shower Trolley is designed to lift high patient loads and offers a large showering platform giving improved comfort for the patient and greater flexibility for the caregiver.

The TR 4200 is a great solution to prevent back injuries and to minimize static load and offers a safe and ergonomic working environment for the caregiver, even when working with bariatric patients.

The trolley has endless application possibilities including showering, transporting and providing an efficient dressing or treatment surface area. The bariatric resident can be transferred from bed to shower and back again in a safe and secure manner.

The hand control operates the power tilt in both directions for improved drainage and tilts to a "Trendelenburg" position when desired. The side rails can be pressed together when travelling through narrow doorways reducing the trolley width.

Floor clearance at 5.7" (145 mm) to enable floor lift transfers, and an audible tone sounds when the batteries run low. Potential impact and wear areas are made of powder coated stainless steel. The stretcher has rubber bumper wheels on all four corners to protect walls and doorways.



Specifications

Length	85" (2 150mm)
Width	29" (740 mm)
Height:	21 - 33" (535 - 835 mm)
Working Load Limit	600 lbs (270 kg)
Brake bar and upper side rail/hinge	Powder coated stainless steel
Castors:	5.9" (150 mm). Centralized brake and straight steering
Control:	Hand control for height and tilt adjustment
Mattress, pillow	Flame retardant material, grey
Battery (TR 3000)	Rechargeable, 24V, 7 Ah





Features

- The stretcher is easily and quietly raised by two powerful actuators. The hand control operates the power tilt in both directions and raises and lowers the trolley.
- The height of the base allows mobile sling lift transfers.
- The stretcher can easily be tilted to the "Trendelenburg" position, to alleviate a person in shock. An audible tone sounds when the stretcher is level and the batteries need charging.
- When transporting through narrow doorways the side rails can be folded reducing the trolley stretcher width.
- The stretcher has rubber bumper wheels on all four corners to protect walls and doorways.
- Side rails swing down or lock in a horizontal position for transfer and upright position for transport.
- The trolley is made of durable powder coated steel, zinc plated steel that make cleaning simple and efficient.
- The mattress is easily removable.
- Foot control for straight steering and central breaking.
- Come with a magnetic (MAGCODE) battery charger, mattress, head pillow and 39.4" (1 m) drainage hose as standard.

Accessories/Options

- Backrest wedge pillow, 15 or 30 degrees.
- Can be delivered with blue mattress and head pillow instead of grey (standard).
- Fasteners/straps for attachment on mattresses to siderails.
- Longer drainage hose 98.4 (2.5 m), instead of 39.4 (1 m) as standard.

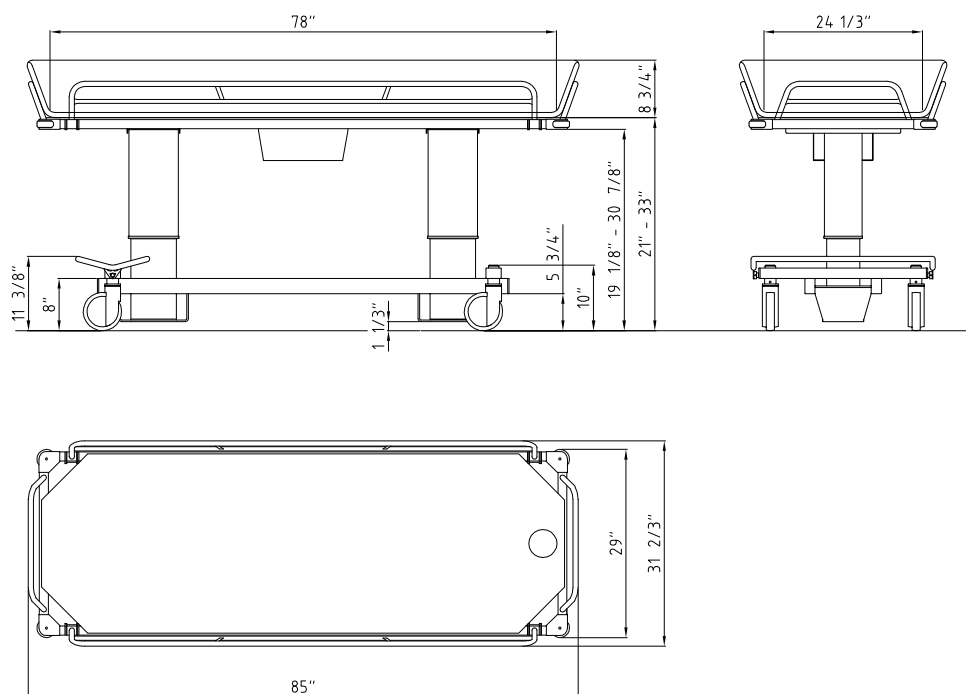
Models

0521050

Shower Trolley TR4200 Atlas Jr.



Dimensions (inch)



TR 4000 Atlas

Bariatric Shower Trolleys *max patient weight 1000 lbs (450 kg)*

TR Atlas Bariatric Shower Trolley

The ATLAS battery operated Bariatric Shower Trolley is designed to lift high patient loads and offers a large showering platform giving improved comfort for the patient and greater flexibility for the caregiver.

The TR 4000 is a great solution to prevent back injuries and to minimize static load and offers a safe and ergonomic working environment for the caregiver, even when working with bariatric patients.

The trolley has endless application possibilities including showering, transporting and providing an efficient dressing or treatment surface area. The bariatric resident can be transferred from bed to shower and back again in a safe and secure manner.

The hand control operates the power tilt in both directions for improved drainage and tilts to a "Trendelenburg" position when desired. The side rails can be pressed together when travelling through narrow doorways reducing the trolley width.

Floor clearance at 5.7" (145 mm) to enable floor lift transfers, and an audible tone sounds when the batteries run low. Potential impact and wear areas are made of powder coated stainless steel. The stretcher has rubber bumper wheels on all four corners to protect walls and doorways.



Specifications

Length	87" (2 210 mm)
Width	36" (915 mm)
Height:	21 - 33" (535 - 835 mm)
Max Patient weight	1000 lbs (450 kg)
Brake bar and upper side rail/hinge	Powder coated stainless steel
Castors:	5.9" (150 mm), brakes on all four castors and straight steering
Control:	Hand control for height adjustment and tilting
Mattress, pillow	Flame retardant material. 15° wedge pillow as standard
Battery	Rechargeable, 24V, 7 Ah



Features

- The stretcher is easily and quietly raised by two powerful actuators. The hand control operates the power tilt in both directions and raises and lowers the trolley.
- The height of the base allows mobile sling lift transfers.
- The stretcher can easily be tilted to the "Trendelenburg" position, to alleviate a person in shock. An audible tone sounds when the stretcher is level and the batteries need charging.
- When transporting through narrow doorways the side rails can be folded reducing the trolley stretcher width.
- The stretcher has rubber bumper wheels on all four corners to protect walls and doorways.
- Side rails swing down or lock in a horizontal position for transfer and upright position for transport.
- The trolley is made of durable powder coated steel, zinc plated steel that make cleaning simple and efficient.
- The mattress is easily removable.
- Foot control for straight steering and central breaking.
- Head end rail folds to horizontal position for extra length.
- Come with a magnetic (MAGCODE) battery charger, mattress, 15° backrest wedge pillow and 39.4" (1 m) drainage hose as standard.

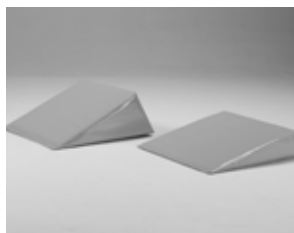
Accessories/Options

- Backrest wedge pillow, 30 degrees.
- Can be delivered with blue mattress and backrest pillow instead of grey (standard).
- Fastners/straps for attachment on mattresses to siderails.
- Longer drainage hose 98.4 (2.5 m), instead of 39.4 (1 m) as standard.

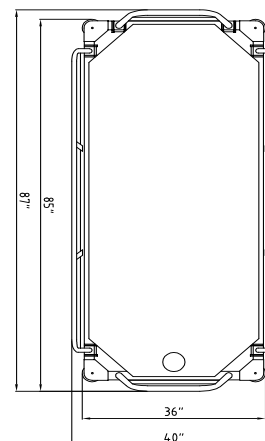
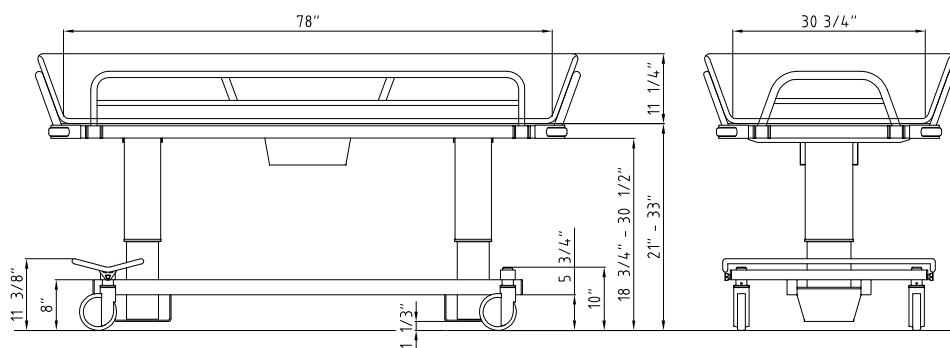
Models

0521040

Shower Trolley TR4000 Atlas



Dimensions (inch)



TR 1000

Shower Chair *max patient weight 440 lbs (200 kg)*

TR 1000 Chair

Height Adjustable Showering at its best

The TR 1000 battery operated Shower Chair is height adjustable and can be tilted backward and forward for easy and efficient transfers and showering

The TR 1000 Height adjustable Shower Chair is a great solution to minimize static load and offers a safe and ergonomic working environment for caregivers.

The full power feature of the TR 1000 allows the caregiver to use the handcontrol to adjust the height and tilting of the chair so that they can best position the resident to care for their individual needs. This provides a safe patient handling environment for both the resident and the caregiver.



Specifications

Lifting stroke Range	16" (400 mm)
Working Load Limit	440 lbs (200 kg)
Tilt Backwards (recline)	25 degrees
Tilt forwards	7 degrees
Structure	Powder coated, zinc plated steel and stainless steel
Castors:	Twin Ø 4" (100mm) castors with locking brakes
Control:	Hand control for height adjustment and tilting
Battery	Removable and rechargeable, 24V, 5 Ah



Features

- Clean design of the chassi and chair makes access easy during transfers and showering. It also makes the TR 1000 easy to clean.
- Suitable to use with most sling hoists and standing/raising aids to make transfers as smooth and safe as possible.
- Seat and chassi create possibilities for toileting over standard toilet or with a bed pan attached to the chair.
- Designed for stability and for ease in mobility and transfers.
- The rear chair design features a smooth surface for ease of cleaning.
- Adjustable head rest.
- Belt over the hip feature for patient safety.
- The adjustable and foldable footrest ensures security and comfort for residents (available factory mounted option).
- All models come with 1 rechargeable battery and a battery charger.

Accessories/Options

- Adjustable and foldable footrest (factory mounted)
- Chest belt (factory mounted)
- Bed pan including lid
- Wallbracket for battery pack
- Straight steering kit (factory mounted)

Models

0521000	Shower Chair with straight armrests
0521010	Shower Chair with front closing armrests (factory mounted)



0521015, Adjustable and foldable footrest, factory mounted



0521020, Chest belt

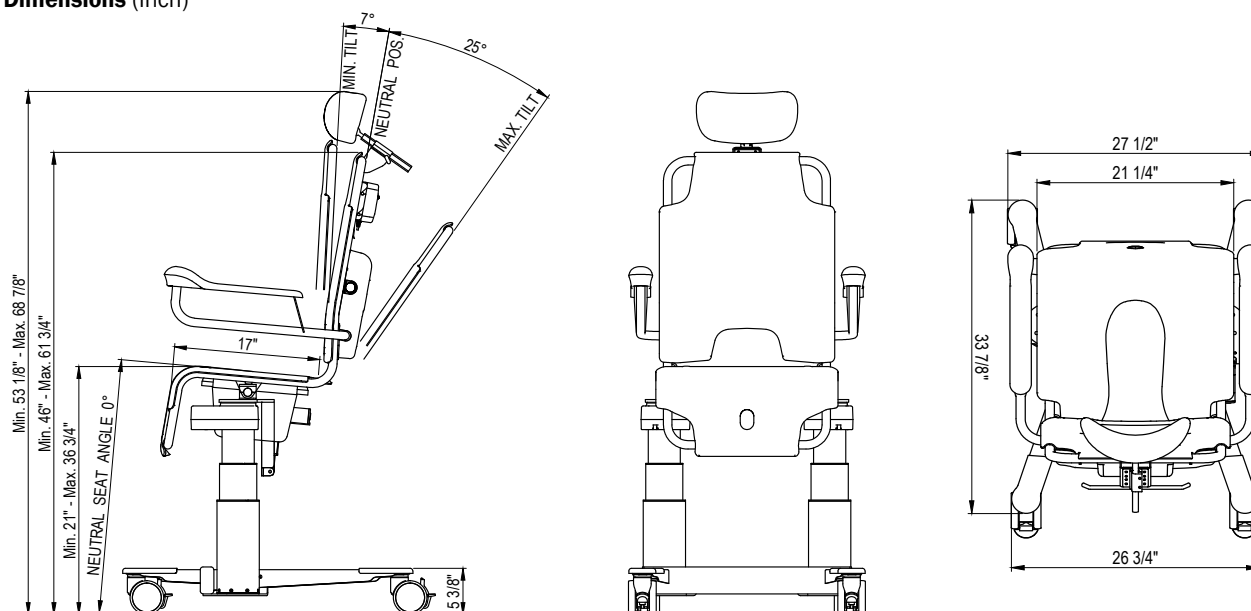


850169, bed pan including lid



Customized colors

Dimensions (inch)



TR 2810

Shower Panel

TR 2810 Shower Panel

Complete Shower System with thermostatic mixing valve.

TR 2810 is a shower panel with thermostatic mixing valve and a separate cleaning system that together with TR shower trolleys fulfill a complete shower system. This system means care is comfortable, safe and hygienic for both resident and attendant.

TR 2810 is also available with a mechanical lock for cleaning detergent bottle (option).

TR 2810 is a shower panel with a built in thermostatic mixing valve and separate on/off valves for the shower system and the cleaning system. The cleaning system runs on cold water to minimize inhalation when cleaning equipment, the panel has a built in bottle for cleaning detergent.

The TR 2810 together with TR shower trolleys is a combined shower system which gives both resident and attendant comfortable hygienic care with high quality.



Specifications

Length	23" (580 mm)
Height	15" (360 mm)
Depth	5" (130 mm)
Reccommended mounting height from floor	49" (1 250 mm)
Min. Dynamic water pressure	0,15 Bar
Max. Dynamic water pressure	5 Bar



Features

- Easily operated thanks to clear and clean design.
- Intergrated hygienic and safe cleaning system for easy cleaning of equipment.
- Built in bottle for cleaning detergent which are automatically mixed with cold water in the cleaning system.
- Thermometer on the shower hose available as option to read shower water temperature.
- Thermostatic mixer
- Valve for patient shower
- Shower spray handle
- Patient shower hose white
- Safety valve for equipment cleaning
- Cleaning spray handle. **Note:** Never to be used on patients.
- Cleaning shower hose yellow
- Cleaning detergent filling
- Cleaning flow setting valve inside panel

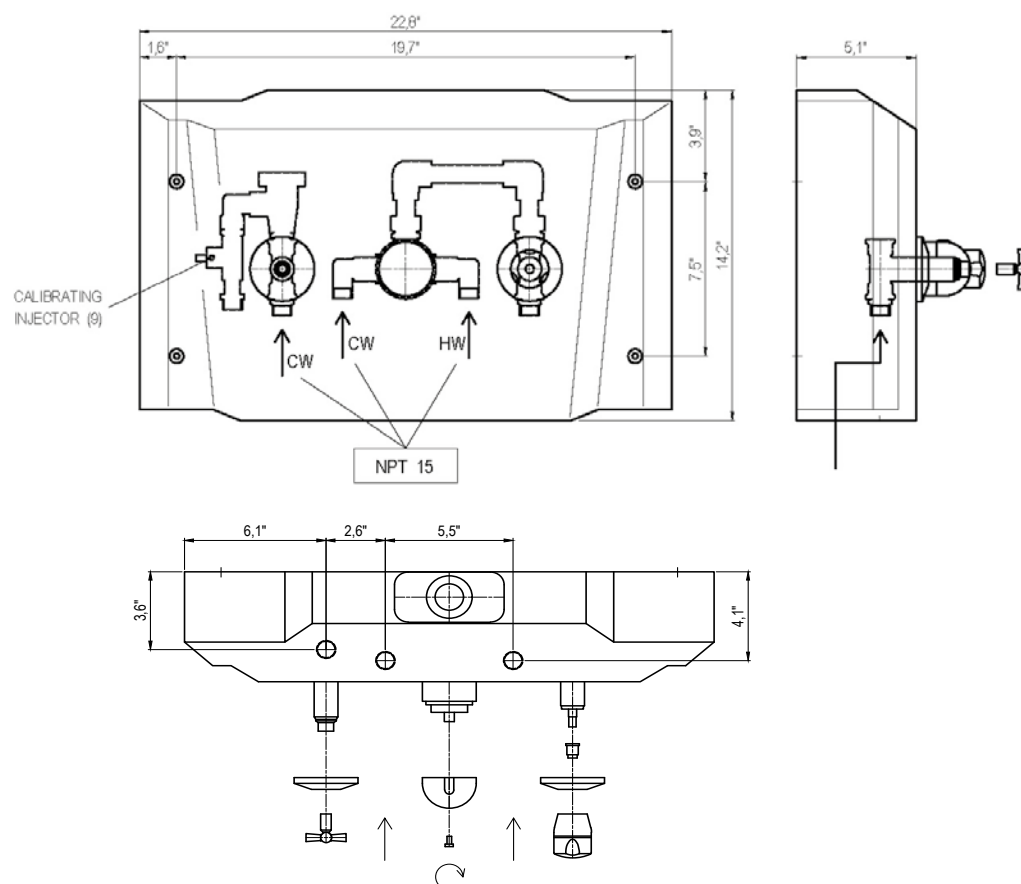
Option

- TR 2810 is now available with a mechanical lock for cleaning detergent bottle.
- Thermometer

Models

0520070-03	Shower Panel US
0520072	Shower Panel with lock for desinf. US

Dimensions (inch)



Shower Trolley Dimension Matrix

Choose the right equipment and improve working environment for your staff, prevent back injuries, increase productivity for the best value.



Model	Type	Working Load Limit	Adjustable height	External Length	External Width	Patient Work Area	Floor Clearance
2000-S, 3000-S	<i>Pediatric</i>	330 lbs 150 kg	24.6" - 36.4" 625-925mm	63" 1 600mm	27.8" 705mm	57.5" x 22" 1 460 x 560mm	3" 75mm
2000-SH, 3000-SH	<i>High chassis</i>	330 lbs 150 kg	27" - 39" 625-985mm	63" 1 600mm	27.8" 705mm	57.5" x 22" 1 460 x 560mm	5.3" 135mm
2000, 3000	<i>Standard</i>	330 lbs 150 kg	24.6" - 36.4" 625-925mm	75" 1 900mm	27.8" 705mm	69.3" x 22" 1 770 x 560mm	3" 75mm
2000-H, 3000-H	<i>High chassis</i>	330 lbs 150 kg	27" - 39" 625-985mm	75" 1 900mm	27.8" 705mm	69.3" x 22" 1 770 x 560mm	5.3" 135mm
2000-L, 3000-L	<i>Long</i>	330 lbs 150 kg	24.6" - 36.4" 625-925mm	83" 2 100mm	27.8" 705mm	77.2" x 22" 1 960 x 560mm	3" 75mm
2000-LH, 3000-LH	<i>High chassis</i>	330 lbs 150 kg	27" - 39" 625-985mm	83" 2 100mm	27.8" 705mm	77.2" x 22" 1 960 x 560mm	5.3" 135mm
3200 /3200 R	<i>Standard</i>	440 lbs 200 kg	19.7" - 35.4" 500-900mm	76.8" 1 950mm	27.4" 695mm	70" x 25.2" 1 780 x 640mm	6.3" 160mm
3200 L / 3200 LR	<i>Large</i>	440 lbs 200 kg	19.7" - 35.4" 500-900mm	84.6" 2 150mm	31.3" 795mm	78" x 29.1" 1 980 x 740mm	6.3" 160mm
4200 Atlas Jr	<i>Bariatric</i>	1000 lbs 270 kg	21" - 33" 535-835mm	85" 2 150mm	36" 740mm	77.5" x 30.7" 1 980 x 620mm	5.7" 145mm
4000 Atlas	<i>Bariatric</i>	600 lbs 450 kg	21" - 33" 535-835mm	87" 2 210mm	29" 915mm	77.2" x 25.2" 1 980 x 780mm	5.7" 145mm

See trequipment.com for additional product information, videos and local representation.



TR EQUIPMENT

TR Group Inc
130 North Madison Street
Rockford, IL61107, USA
Phone: +1 (800) 752 6900
Email: information@trequipment.com
www.trequipment.com



Head office
TR Equipment AB, Sweden
Phone: +46 140 38 50 60
info@trequipment.se
www.trequipment.com